



Math Computing Support maintains a *Standard Macintosh Software Distribution* on our departmental File Server, Euclid.

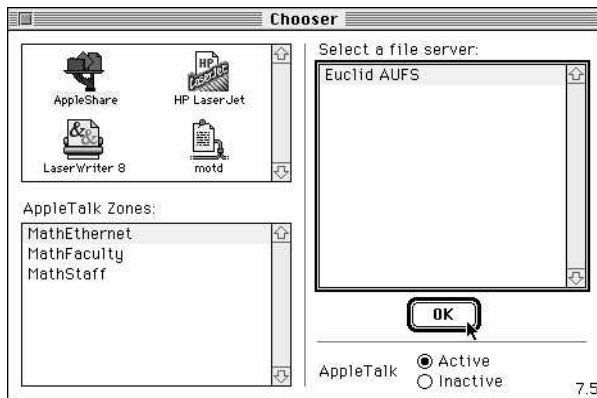
You can connect to this archive and download the latest versions of selected free Macintosh networking software. Although the software is served from our UNIX fileserver, the Columbia AppleTalk Package will present the software archive to you in the form of a Remote Hard Disk *volume*, which you can control and manipulate in the Macintosh Finder the same way you usually work with local files.

Connecting:

From the pull down Apple menu in the left corner of your screen, select "Chooser."

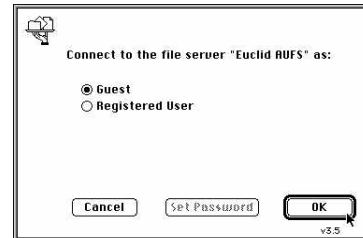
When the Chooser appears, make the following three selections and then choose "OK"

- AppleShare
- MathEthernet
- Euclid AUFS



User Name:

The Math Computing Support *Standard Software Distribution* allows "Guest" Access. Select the "Guest" radio button and then "OK"



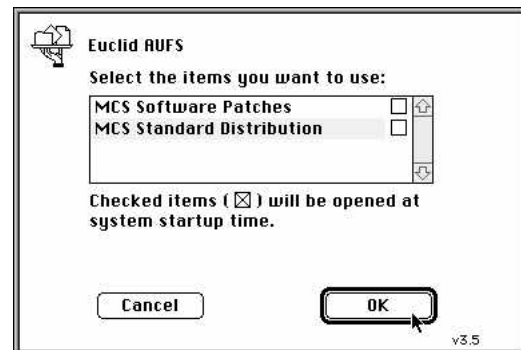
Euclid users may be interested to know that they can mount a special subdirectory of their Euclid Home in this manner, by connecting as a registered user.¹

Volumes:

More than one virtual-disk volume may be available via AUFS. At present, we're offering a "Standard Software Distribution" and "Software Patches."

A dialog box will appear asking you to "Select the items you want to use." You can highlight multiple items by <Shift> + clicking the mouse.

Please do **not** put an **X** in any of the system-startup check boxes in this dialog. Having your Macintosh *mount*(connect to) remote disk volumes across our department's slow LocalTalk network will inconvenience other users and is strongly discouraged!



After highlighting the volume or volumes you'd like to use, click "OK"

¹Further information is available using the "man aufs" command while connected to Euclid via telnet.

Copying The Software:

When successfully connected, an AUFS icon will appear on the desktop for each volume you have mounted.



You can open the volume icon by double-clicking on it. Desired folders and files from the MCS Standard Software Distribution can easily be dragged onto your local hard drive, where you can install, configure, and use them!

Wait!

Before you start copying files or running programs like crazy, please consider the following:

- **Copy First!** Make sure you've copied (dragged) the software that you want from the Standard Software Distribution volume to the local hard drive of your Macintosh before attempting to use any programs. Running the programs from the Fileserver will grind our poor network to a halt!

- **Choose Carefully:** Some Software is available in *multiple versions*, depending on your Macintosh Operating System or Macintosh CPU. PowerMacs using the PowerPC CPU and older Macs running the System 6 operating system are good examples. Software available in Multiple Versions is stored in folders beginning with a "•" bullet character and ending with the word "Versions" if it fits.
- **Copy Sparingly:** The Math Department's 100 Macintoshes take turns 'talking' on a 230 Kbps telephone wire called a PhoneNet.

Getting Help:

If you need help or experience problems using this *Standard Software Distribution*, please contact *Math Computing Support*.

The **best** way to reach us is via e-mail:
mathhelp@math.ucsd.edu

Answers to *frequently asked questions* are available via our Web Server:

<http://mathadm.ucsd.edu/>

You can also try stopping by AP&M 5702 between 10am and 3pm weekdays, or calling x44591.

