



Math
Computing Support
Mac Files

via AUFS

mathhelp@math.ucsd.edu
619-534-4591
AP&M 6018

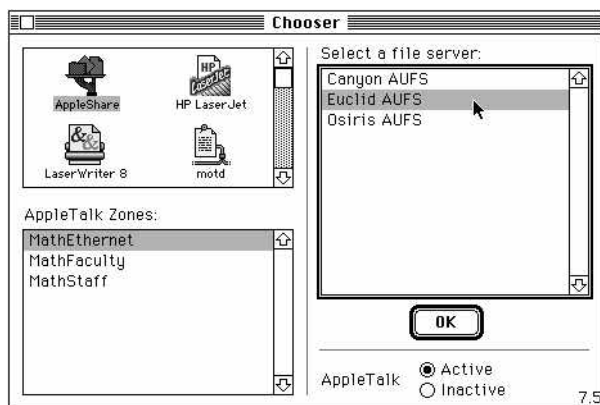
The Apple-UNIX FileServer service (AUFS) allows Macintosh users to save and work with files that are kept on a remote UNIX file server. Documents saved in this way are reliably backed up every night, remain available to you from *any* Macintosh on the Math LocalTalk network, and have the added benefit of password protection.

If you're on the Math Staff, you can easily save your important documents in this way. This document will show you how to connect and use AUFS via Euclid, our departmental file server.

Connecting:

From the pull down Apple menu in the left corner of your screen, select "Chooser." When the Chooser appears, make the following three selections and then choose "OK"

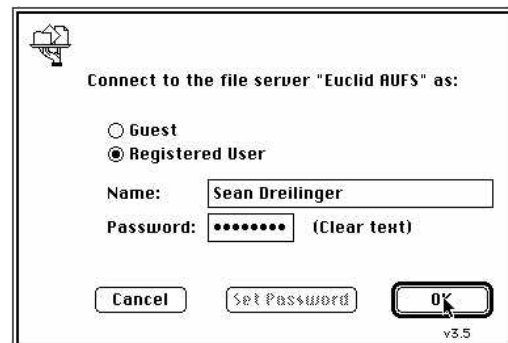
- MathEthernet
- AppleShare
- Euclid AUFS



User Name:

The account you will access on Euclid via AUFS is the same as your "e-mail" account. When the dialog box entitled "Connect to the FileServer 'Euclid AUFS' as:" appears, you can enter one of the following in the Name field:

- Your 8-character UNIX account name, probably the same as your @math.ucsd.edu e-mail address.
- Your Full Name, as recorded on Euclid in the password file.

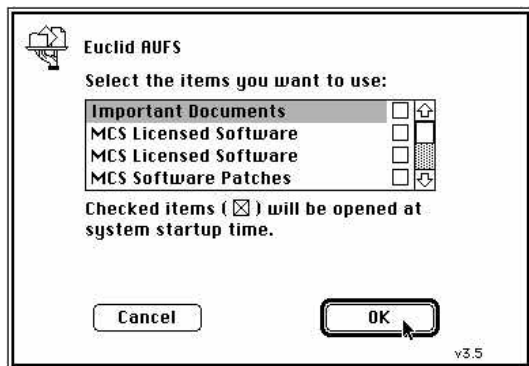


Your Password to mount an AUFS volume consists of the *first 8 characters* of your UNIX Account password. Math Staff should enter their "e-mail" password, i.e. the one you use with your E-mail program such as Eudora. Your password will not appear as you type it. Once you've entered your Name and Password, choose "OK."

Volumes:

A dialog box will appear asking you to "Select the items you want to use:" You can highlight multiple items by <Shift> + clicking the mouse.

We've created a personal **Important Documents** volume for each member of the Math Staff. Additional virtual-disk volumes may also be available. At present, we're sharing a "Standard Software Distribution" and "Software Patches" as read-only volumes.



Please do **not** put an **X** in any of the system-startup check boxes in this dialog. Having your Macintosh *mount*(connect to) remote disk volumes across our department's slow LocalTalk network will inconvenience other users and is strongly discouraged!

After highlighting your **Important Documents** volume (or other volumes you'd like to use), choose "OK"

Working With AUFS Volumes

When successfully connected, an AUFS icon will appear on the desktop for each volume you have mounted.



You can open the volume icon by double-clicking on it. It should look and behave like any other Macintosh hard disk.

Folders and files can easily be copied from your local hard drive to Euclid by dragging items from the Finder onto your **Important Documents** volume icon.

If you plan on re-connecting and saving your files via AUFS regularly, we recommend you create an *alias* for the **Important Documents** volume, which will allow you to re-connect quickly. To create an alias, select the **Important Documents** volume icon on the desktop. Choose "Make Alias" from the pull-down "File" Menu.

To disconnect from the file server, drag the your AUFS volume icon(s) into the trash.

Limitations

- **Disk Space:** Our file server Euclid is gradually running out of disk space. Please take "important documents" to mean just that-- copies of your most important files, **never** application programs.
- **Network Speed:** Working with Macintosh files via AUFS will be much slower than accessing files on your local hard disk, because the information must travel across our heavily used LocalTalk network. The Math Department's 100 Macintoshes and 27 printers all take turns 'talking' on a telephone wire called a PhoneNet. The maximum speed of this PhoneNet is 230Kbps, divided up among all the people who are using it at once.

Getting Help:

If you need help or experience problems using *Mac Files via AUFS*, please contact *Math Computing Support*.

The **best** way to reach us is via e-mail:
mathhelp@math.ucsd.edu

Answers to *frequently asked questions* are available via our Web Server:

<http://mathadm.ucsd.edu/>

You can also try stopping by AP&M 5702 between 10am and 3pm weekdays, or calling x44591.